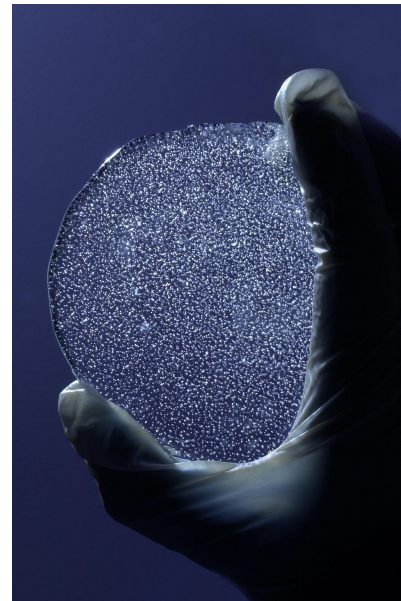


15. Juni 2012

Exkursion der Schweizerischen Gesellschaft für Schnee, Eis und Permafrost

## Klima-Studien an Eiskernen / Climate studies on ice cores

Universität Bern, Climate and Environmental Physics  
Physics Institute & Oeschger Centre for Climate Change Research



In view of the recent ongoing human induced climate change the natural variability in climate (temperature, precipitation) and greenhouse gas concentrations becomes of major concern. Direct atmospheric observations of these parameters, however, are restricted to a few centuries when it comes to temperature and only a few decades when it comes to greenhouse gases. Accordingly, reliable records from natural climate archives are the only way to extend such observations back in time.

Ice cores from both polar regions represent one of the most important of such climate archives, providing quantitative climate data over up to 800,000 years back in time in very (in many cases seasonal) resolution. Moreover, bubble enclosures in ice core represent the only archive of the air composition in the past. Here the latest highlights of climate and greenhouse gas reconstructions using ice cores from both polar ice sheets will be presented, and put into relation to the current climate.

Treffpunkt: **15. Juni 2012, 13:40 Uhr im Eingang, ExWi Gebäude** der Universität Bern  
Zugang: vom Bahnhof mit Lift auf die Grosse Schanze, rechts (NE) des Uni Hauptgebüdes  
Anreise: **12:32 ab Zürich HB, 12:20 de Lausanne**  
Anmeldung: **bis 7. Juni** an Martin Lüthi: [luethi@vaw.baug.ethz.ch](mailto:luethi@vaw.baug.ethz.ch), Tel. 044 632 40 93  
Führung: Hubertus Fischer, [hubertus.fischer@climate.unibe.ch](mailto:hubertus.fischer@climate.unibe.ch)

## Generalversammlung (GV): anschliessend an die Exkursion

Treffpunkt: **15. Juni 2012, 16:15 Uhr im Seminarraum A97, ExWi Gebäude** der Universität Bern  
Zugang: vom Bahnhof mit Lift auf die Grosse Schanze, rechts (NE) des Uni Hauptgebüdes